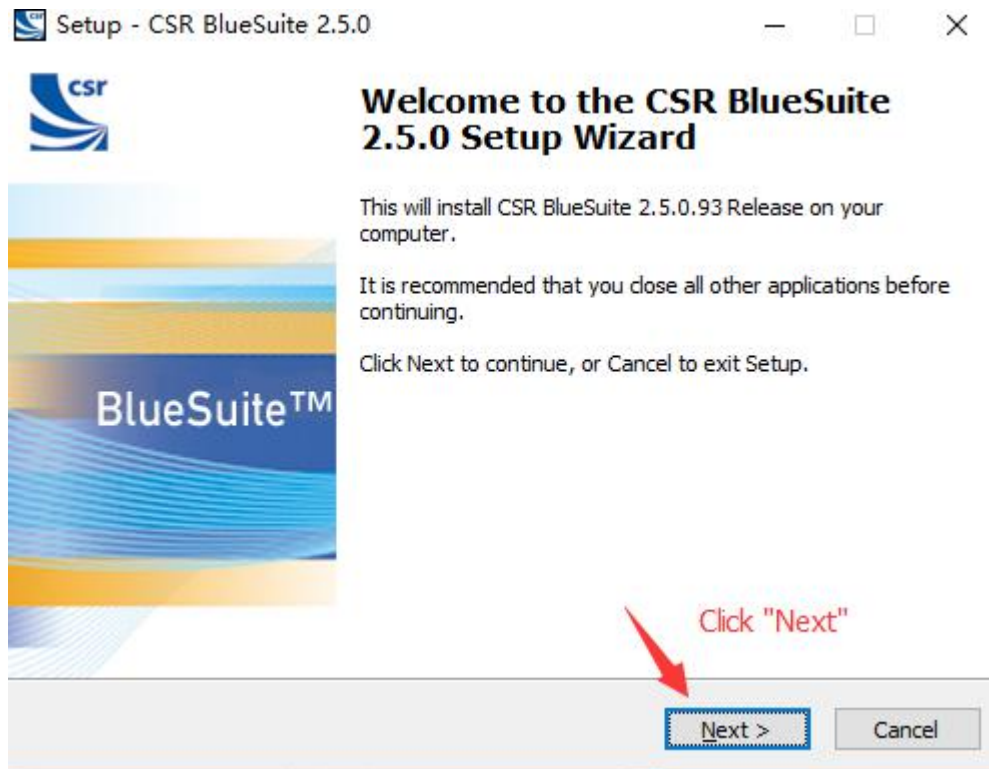
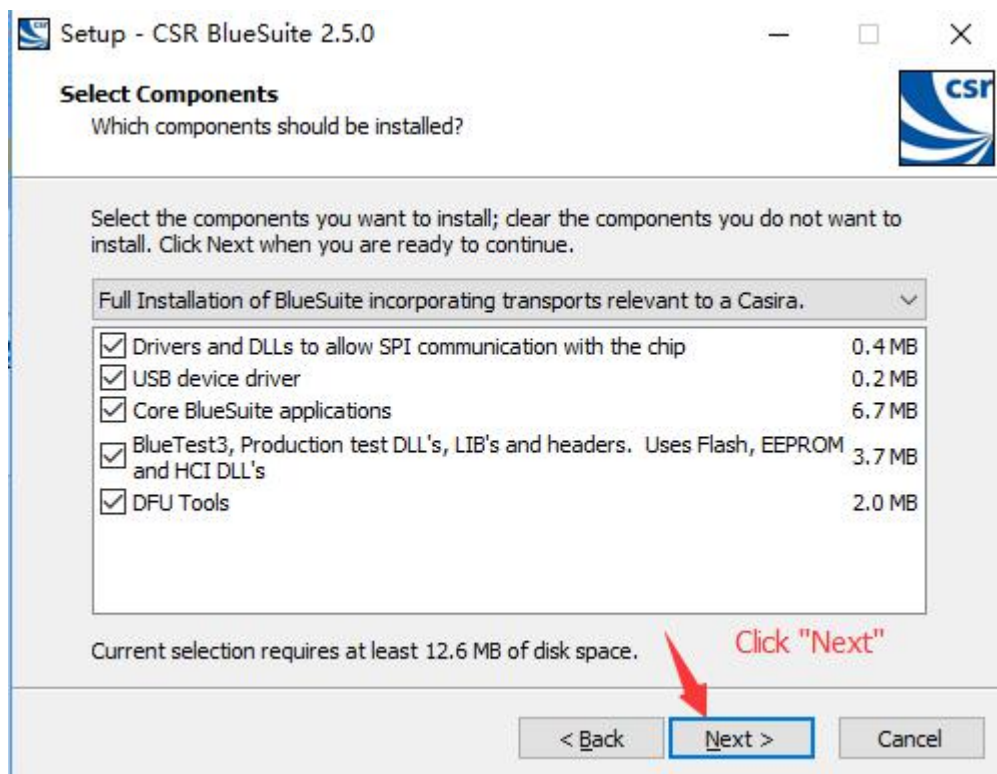
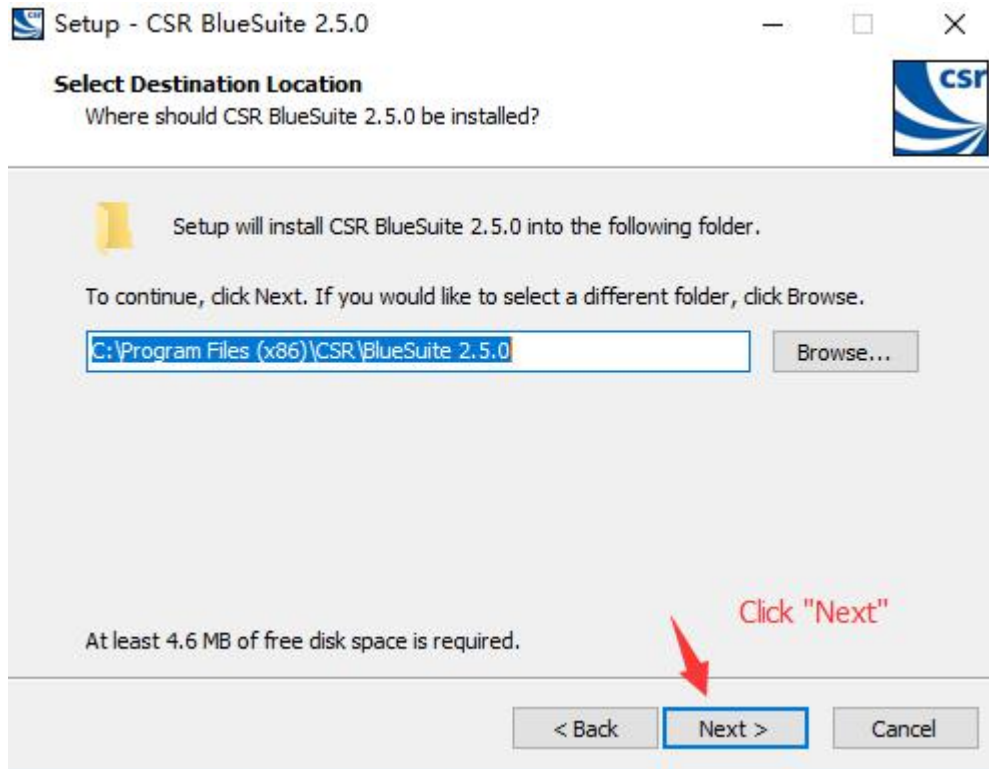
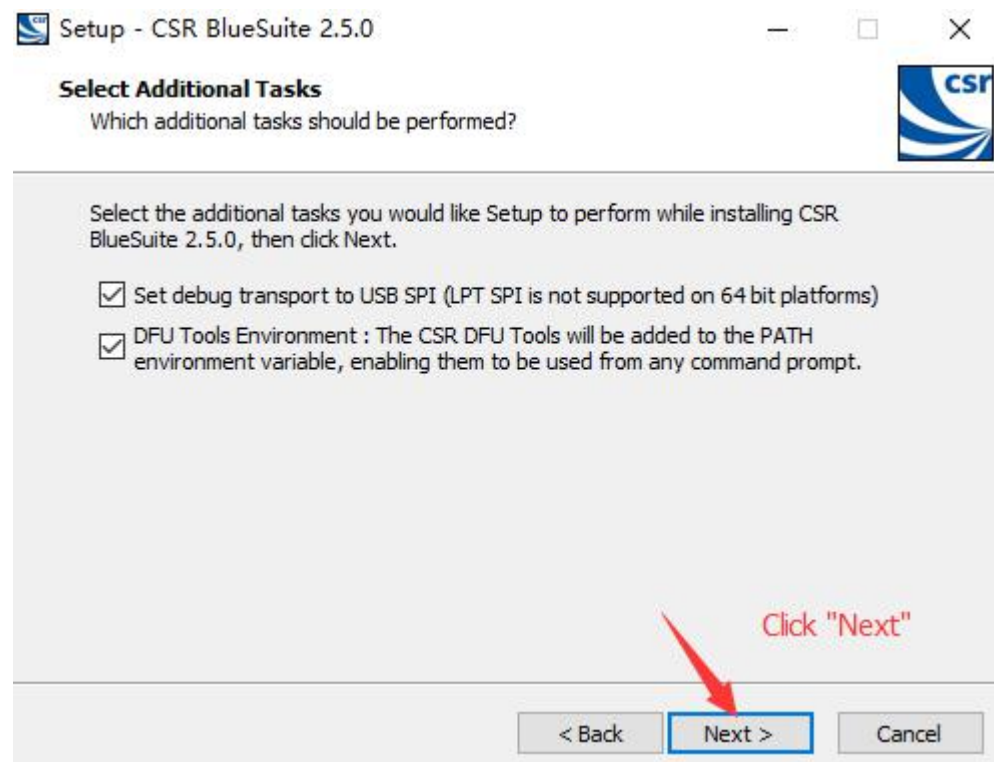
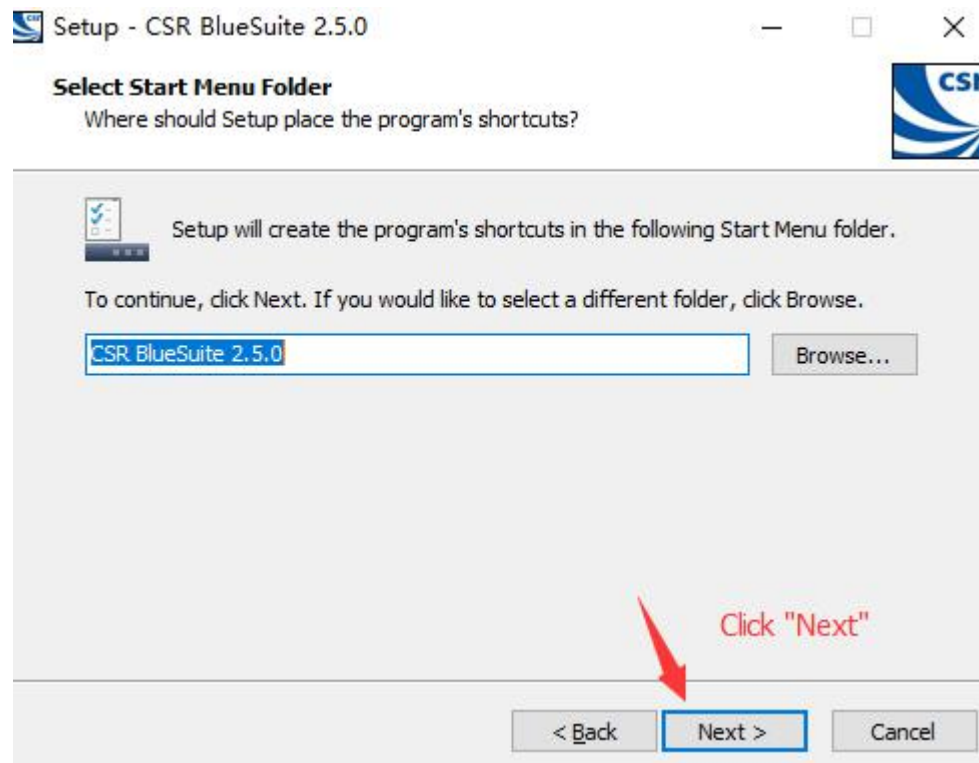
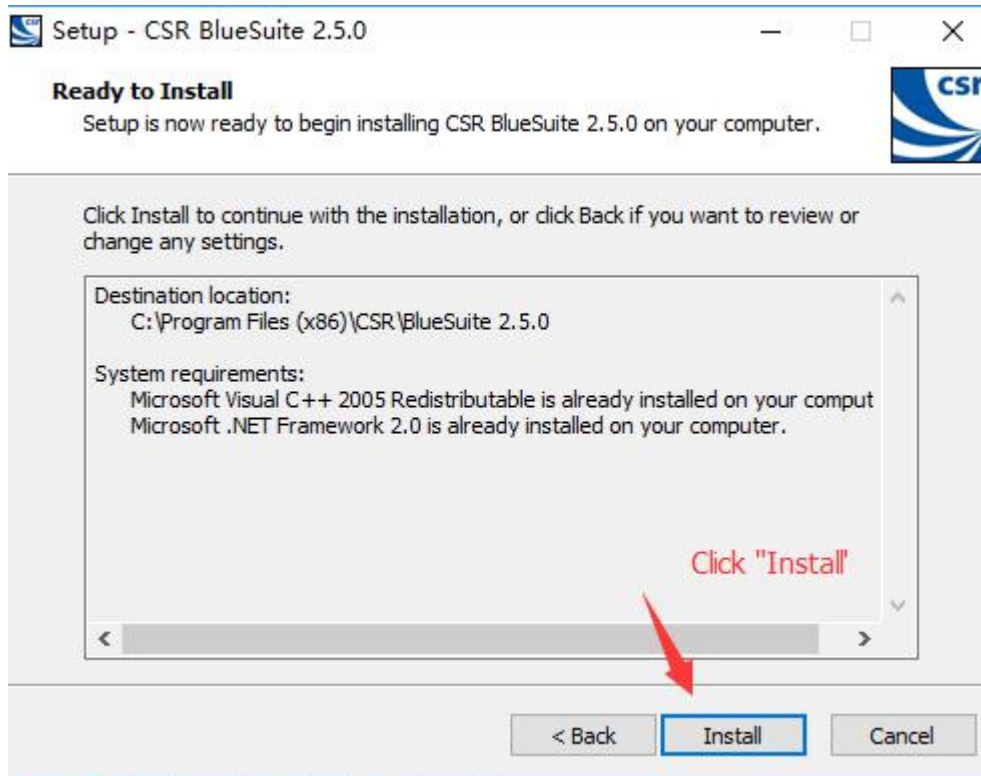


Step 1: Set Up CSR BlueSuite 2.5.0

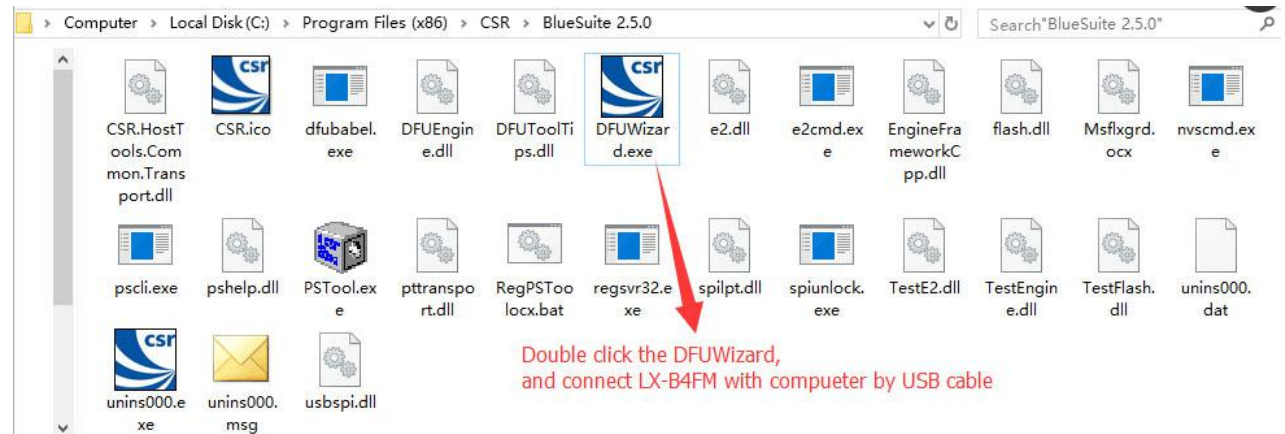




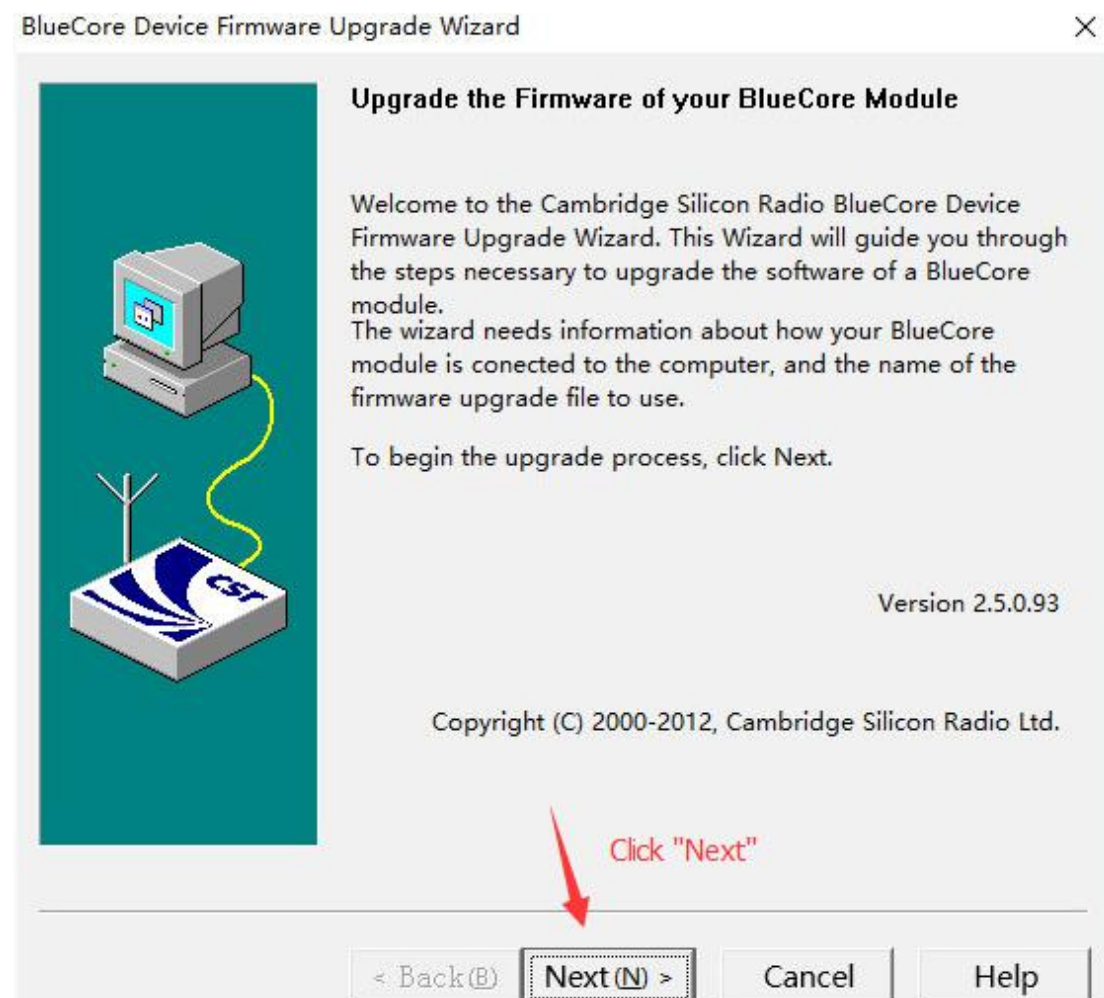




Step 2: Once finished installing, open the CSR BlueSuite 2.5.0 where you filed.



Step 3: Double click the DFUWizard, and connect LX-B4FM with computer by USB cable.



BlueCore Device Firmware Upgrade Wizard



Connection Type

Please select how the BlueCore module is connected to your computer:

☒ Universal Serial Bus (USB)

☐ COM port (RS-232)

To continue, click Next.

Select "USB" and click "Next"

< Back (B)

Next (N) >

Cancel

Help

BlueCore Device Firmware Upgrade Wizard



Upgrade Action

Please select whether you wish to download a new version of firmware or restore a previous version:

☒ Download a new version of the firmware, saving a copy of the current version first. Any previously saved version will be replaced. (Recommended.)

☐ Download a new version of the firmware, without first saving a copy of the current version.

☐ Restore the previous version of the firmware. Use this option if a problem has been encountered after performing a previous upgrade.

Backup C:\Users\Administrat...\saved.dfu

Change

The previously saved firmware version is described as:
LOADER=elv_8unified_fl_bt3.0_26f_1205042005_native_encr5
6 2012-05-04,

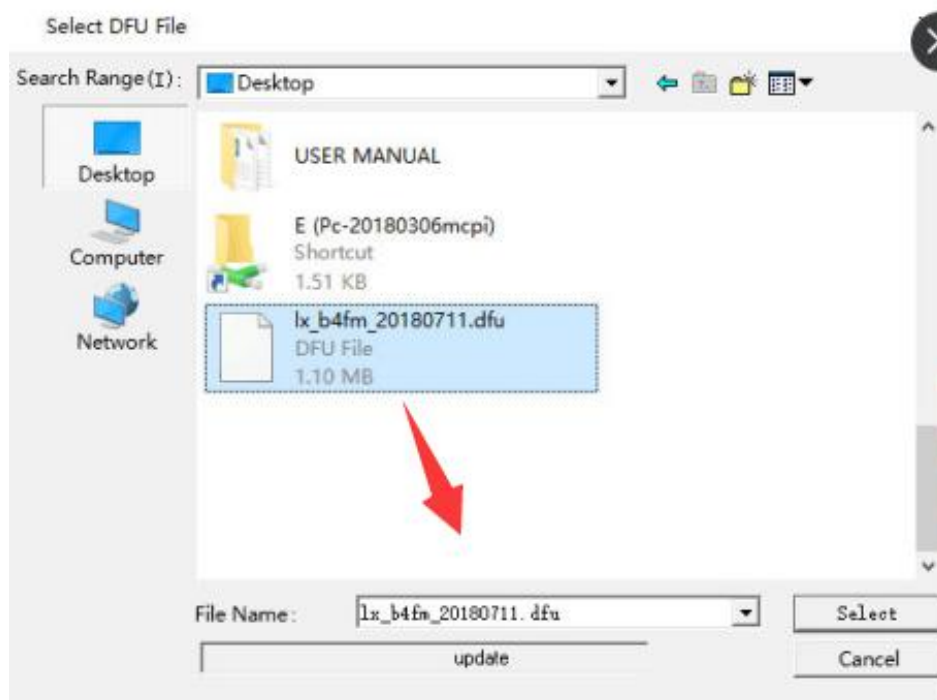
Select the first download version and click "Next"

< Back (B)

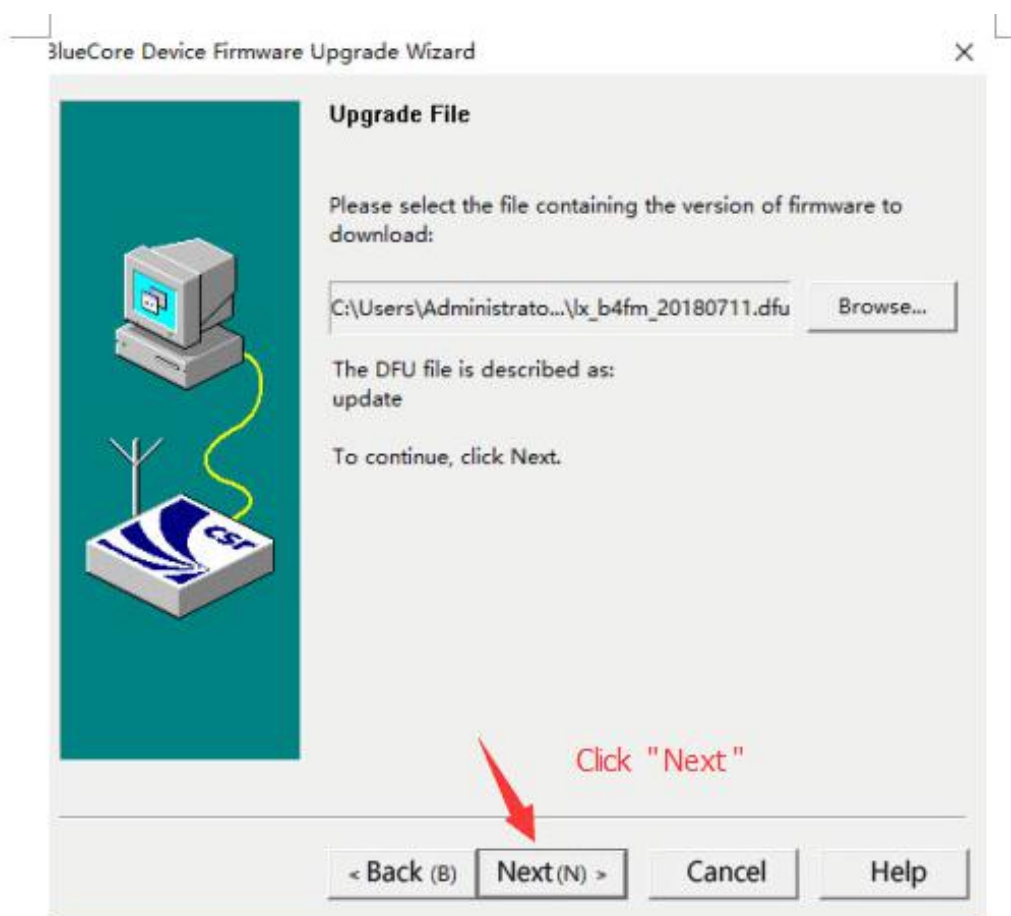
Next (N) >

Cancel

Help



Before select the DFU file, you should save the document on your computer first.



BlueCore Device Firmware Upgrade Wizard



Ready to Upgrade

The wizard has now collected all of the information that it requires to perform the upgrade. Please check the options listed below, and then click Next to start the upgrade, or Back to make changes.

USB device:

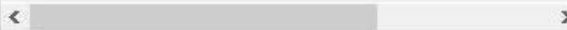
CSR_HUB6_PORT3 (BD_ADDR = ??-??-??-??-??-??)

Upload:

Existing firmware will be saved

Download:

C:\Users\Administrator.ZGC-20140211SRN\Desktop\update



Click "Next"

< Back (B)

Next (N) >

Cancel

Help

BlueCore Device Firmware Upgrade Wizard



Upgrade in Progress

Please wait while the upgrade is completed...

Upgrade procedure**Establishing communications and reconfiguring device**

Attempting to start DFU mode.
Waiting for device to enumerate.

Abort

< Back (B)

Next (N) >

Cancel

Help

Successful Upgrade

The firmware of your BlueCore module was successfully upgraded using C:\Users\Administrator.ZGC-20140211SRN\Desktop\lx_b4fm_20180711.dfu, and the new version appears to be operating correctly.

If you encounter problems using the BlueCore module then run this wizard again and select the option to restore the previous version of the firmware.

Time taken:

Upload	00 minutes 12 seconds
Download	01 minutes 15 seconds
Total	01 minutes 33 seconds

The previous version of firmware is described as:

.0_26f_1205042005_native_encr56 2012-05-04

[Change](#)

Click "Finish"

< Back(B)

Finish

Cancel

Help